



RMA ELECTRONICS, INC.

Welcome To Our May Newsletter

Camera - Typically Where It All Starts



"I am looking for a simple inspection camera." This is a very common inquiry we receive. End-users are often tasked with the responsibility of designing and implementing a new vision system, but they sometimes do

not know where to start, or even what they ultimately might need.

Before we are able to make any product recommendations, we will typically ask a series of questions. Let's assume we have already determined this will be an area scan application. Perhaps we might have some differing opinions from other experienced industrial camera suppliers, but here are some of the important qualifying questions.

- Do you need color or monochrome?
- Is there a minimum resolution requirement?
- Is there a minimum frame rate requirement?
- Is there a preference for digital interface type?
- Is this for a live view inspection or will some image processing be needed?

Once we have been able to recommend some suitable camera models based on feedback, we generally then discuss the other related equipment which *might be* needed such as a lens, filter, cable, lighting, software, and possibly additional hardware if a frame grabber might be suitable.

RMA Electronics, Inc. offers a large selection of industrial cameras primarily from [Allied Vision](#), [The Imaging Source](#), [Vieworks](#), and [Kowa](#), while [Emberion](#) is our camera provider for Visible-SWIR and SWIR applications. Contact us if we can assist with helping to select the camera (and other system components) for your next project.

**View Camera
Choices**

Statement on the Current Tariff Situation



RMA Electronics is taking a proactive approach with the current tariff situation. At this point, we have reached out to all of our manufacturers / suppliers requesting updates for any impact on pricing. With over 3,000 products currently being offered on our website, this has created its own set of challenges for providing updated messaging and pricing.

At this time, due to the volatility with tariff rates from China, we have removed pricing on our website for products we sell that are produced in China. For any of these products, please reach out to us so we can provide the most updated pricing. Besides China, we also import products directly from Japan, South Korea, Canada and multiple countries in the EU, so although perhaps there is less of an impact on pricing, there are still adjustments needed in some cases.

The impacts from these tariffs has resulted in our having to adjust sell prices for most products. We realize this has created an additional burden to customers, especially for OEMs, but we are trying to minimize this as best we can. Thank you in advance for your understanding.

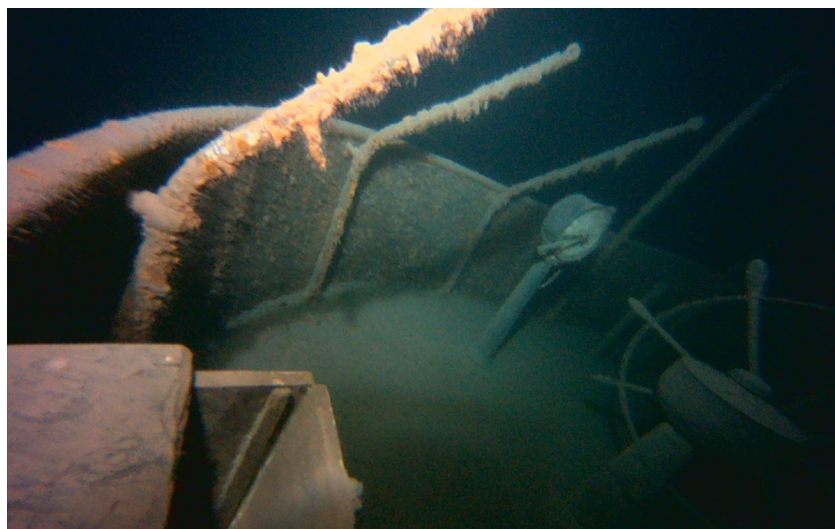
New Supplier Announcement: Metaphase Technologies



RMA Electronics is pleased to announce that we have become an official distributor for Metaphase Technologies, a U.S. based manufacturer of industrial lighting products. Lighting is often a vital component for a vision system by utilizing various methods to increase contrast and accuracy for inspection. This can be done using back lights, bar lights, coaxial lights, dome lights, line lights, or ring lights either on their own or in combination.

Metaphase Technologies products are manufactured in the U.S. with a strong commitment to engineering expertise and support. Over the coming weeks we plan to begin integrating their products within our website and we welcome any opportunities to discuss their products.

Customer Story - Hunting Shipwrecks





(Photos are courtesy of Jerry Eliason and are being used with his permission.)

Jerry Eliason made his first dive in one of the Great Lakes in 1968 and since then he has had a passion for hunting and researching shipwrecks. While now in his early 70's, Jerry no longer dives but he uses a camera system he has developed which continues to evolve and utilize some of the latest technologies for industrial cameras and lenses.

While the majority of his shipwreck discoveries have been in Lake Superior and range from 300 to 1,000 feet in depth, he has also made successful discoveries in Lake Michigan, Lake Huron, Lake Erie, and Newfoundland - resulting in being part of 22 shipwreck discoveries over the years.

RMA Electronics has been providing various equipment to Jerry since 2010 to assist with these efforts - typically the latest machine vision lenses, being wide angle with good low-light performance and NIR responsiveness. The most recent lens upgrade for his camera systems uses a pair of Azure Photonics **AZURE-0328CF** 2/3" 3.74mm 12 MP rated C-Mount lenses.

We are grateful to Jerry for sharing his story with us and look forward to learning about more shipwreck discoveries in the future.

Thank you for being a subscriber to our monthly newsletter.

Upcoming trade show event in the U.S.!

RMA Electronics, Inc. will be participating at **Automate 2025** in Detroit, MI from May 12-15, 2025. We will be assisting Kowa and Emberion who will be co-exhibiting at Booth # 6100.

Please reach out if you are planning to attend this trade show or visit the booth to see live camera demonstrations, as we would welcome the opportunity to meet with you. Thank you.

Sincerely,

*Ron Massa Jr.
President, RMA Electronics, Inc.*

Email: ronjr@rmaelectronics.com

**RMA Electronics
Website**

RMA ELECTRONICS, INC.
SALES@RMAELECTRONICS.COM



RMA Electronics Inc. | 35 Pond Park Road Unit 12 | Hingham, MA 02043 US

[Unsubscribe](#) | [Update Profile](#) | [Constant Contact Data Notice](#)